

Seasons

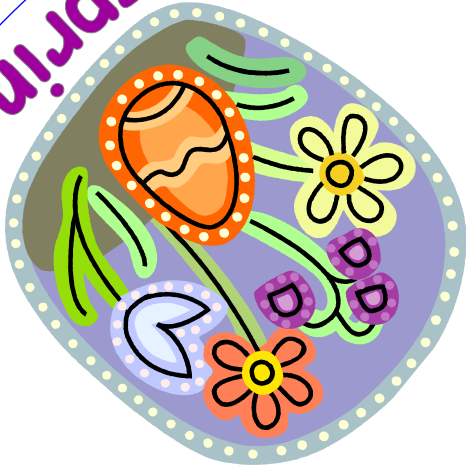


✂

*Cut top and bottom circles out.
This pie-shaped slice is the "window":
cut along purple lines to cut this part out.
Laminate for durability.
Place this "Seasons" circle on top of
the circle on the second page.
Use a paper fastener ("brad") to poke
through the black dot in the middle
of the circle..*

✂

spring



summer



fall



winter

